

### So You Have a Manuscript Transfer System: Now What?

CSE Spring Meeting, May 8, 2018  
Kerry Kroffe, Director, Editorial Services, PLOS  
kkroffe@plos.org  
@kerrykroffe

---

---

---

---

---

---

---

---


### Public Library of Science

**PLOS** is a nonprofit **publisher** and **advocacy** organization with a mission to accelerate progress in science and medicine by leading a **transformation** in research communication.

**100 PERCENT**  
OPEN ACCESS

**13+ YEARS**  
AS A LEADER IN OPEN ACCESS PUBLISHING

**7** PEER-REVIEWED JOURNALS



---

---

---

---

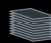

---


---

---

---

### 2017 Highlights

 <p>ARTICLES PUBLISHED <b>23,000+</b></p>	<p><b>2.5</b> MILLION UNIQUE VISITORS TO PLOS BLOGS*</p>	<p><b>7,200</b> EDITORS <b>74,000</b> REVIEWERS</p>
<p><b>15+ MILLION</b> MONTHLY ARTICLE VIEWS</p>	 <p><b>380,000+</b> TWITTER FOLLOWERS*</p>	 <p><b>108,000+</b> PLOS CONTRIBUTORS WITH ORCID iDs</p>
<p><b>2,000,000+</b> MONTHLY ARTICLE DOWNLOADS</p>	<p><b>30,000</b> MEMBERS OF FIELD-SPECIFIC PLOS COMMUNITIES</p>	<p><b>64</b> NOBEL LAUREATES HAVE PUBLISHED THEIR WORK WITH PLOS*</p>



---

---

---

---

---

---

---

---

### Transfers, transfers, everywhere!

- Pre/Post-Review
- Facilitated
- Accept into ONE
- bioRxiv



---

---

---

---

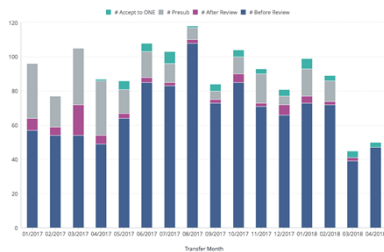
---

---

---

---

### Transfers by Type & Submission Month



---

---

---

---

---

---

---

---

### Why?



- The obvious
- But really
  - Mission Alignment
  - Community Engagement
  - Recruitment



---

---

---

---

---

---

---

---

Accept into ONE



---

---

---

---

---


---

---

---

Context

- 4 Community Journals (CJs)
  - Selective
  - Externally run; internally supported/managed
- Approximately 8K submissions in 2017
- 2400 acceptances in 2017
- Around 2K Editors across the journals



---

---

---

---

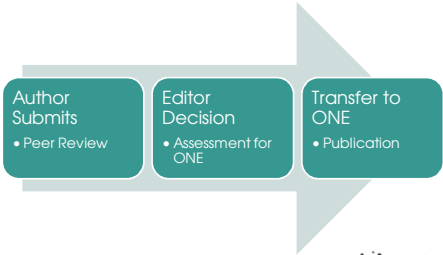
---

---


---

---

Accept into ONE



```
graph LR; A[Author Submits  
• Peer Review] --> B[Editor Decision  
• Assessment for ONE]; B --> C[Transfer to ONE  
• Publication];
```



---

---

---

---

---

---

---

---

### Process Benefits

- Author
  - Peer review conducted at original journal
  - No transfer angst
  - Speedy publication
- Editor
  - Conservation of resources
  - Acknowledgement/Credit



---

---

---

---

---

---

---

---

### Challenges

- Editor Engagement
- Training
- Author buy-in
- Process alignment



---

---

---

---

---

---

---

---

### Practical Advice

- The devil is in the details
- Transfers are the **authors'** choice
- Support your Editorial Board Members
- Build reporting capabilities/feedback mechanism
- Standardize checks/requirements across journals
- Realistically communicate with authors



---

---

---

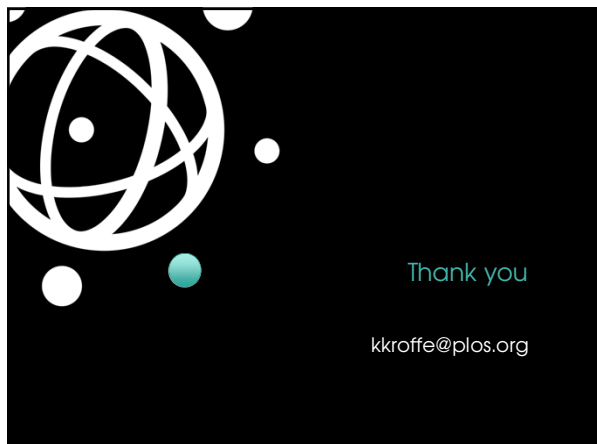
---

---

---

---

---



---

---

---

---

---

---

---

---